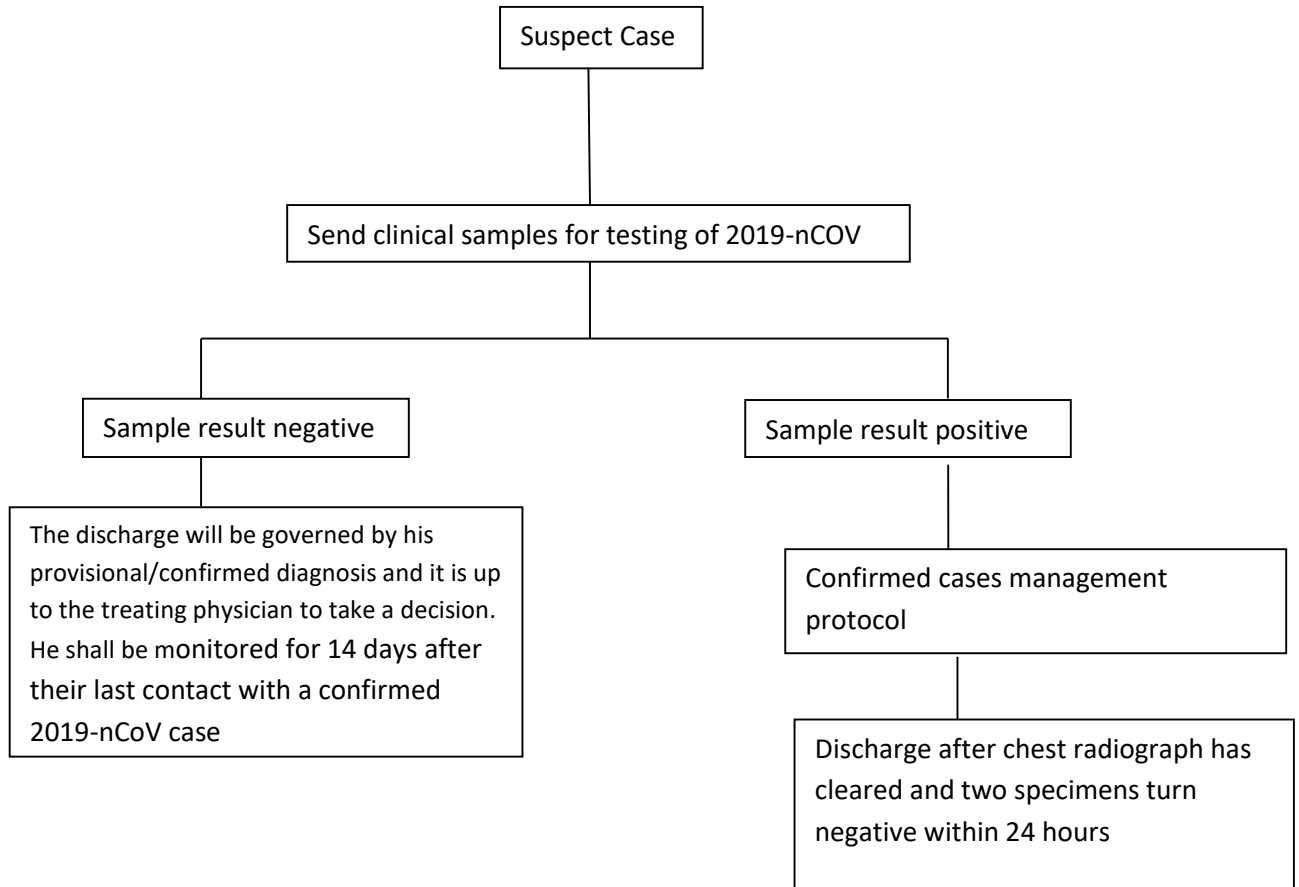


## Discharge Policy of nCoV Case

Clinical samples of any suspect/probable case\* of nCoV will be sent for laboratory confirmation to designated laboratories. The case will be kept in isolation at health facility till the time of receipt of laboratory results and given symptomatic treatment as per existing guidelines. If the laboratory results for nCoV are negative, the discharge of such patients will be governed by his provisional/confirmed diagnosis and it is up to the treating physician to take a decision. The case shall still be monitored for 14 days after their last contact with a confirmed 2019-nCoV case. In case the laboratory results are positive for nCoV, the case shall be managed as per the confirmed case management protocol. The case shall be discharged only after evidence of chest radiographic clearance and viral clearance in respiratory samples after two specimens test negative for nCoV within a period of 24 hours.



### **Case Classification\***

#### **Suspect case**

A. Patients with severe acute respiratory infection (fever, cough, and requiring admission to hospital), **AND** with no other etiology that fully explains the clinical presentation **AND** at least one of the following:

- a history of travel to or residence in the city of Wuhan, Hubei Province, China in the 14 days prior to symptom onset, or
- patient is a health care worker who has been working in an environment where severe acute respiratory infections of unknown etiology are being cared for.

B. Patients with any acute respiratory illness **AND** at least one of the following:

- close contact with a confirmed or probable case of 2019-nCoV in the 14 days prior to illness onset, or
- visiting or working in a live animal market in Wuhan, Hubei Province, China in the 14 days prior to symptom onset, or
- worked or attended a health care facility in the 14 days prior to onset of symptoms where patients with hospital-associated 2019-nCoV infections have been reported.

#### **Probable case**

Probable case: A suspect case for whom testing for 2019-nCoV is inconclusive or for whom testing was positive on a pan-coronavirus assay.

**Confirmed case**

A person with laboratory confirmation of 2019-nCoV infection, irrespective of clinical signs and symptoms.

(Source: WHO: [https://www.who.int/publications-detail/global-surveillance-for-human-infection-with-novel-coronavirus-\(2019-ncov\)](https://www.who.int/publications-detail/global-surveillance-for-human-infection-with-novel-coronavirus-(2019-ncov)))